

2014

Every fall, Websense® Security Labs™ researchers predict the key threats your organization should prepare for in the coming year. The following eight predictions indicate some of the biggest challenges will come from areas where most security providers aren't even looking. You can use these insights to review current defenses, identify security gaps and prepare new safeguards.

SECURITY PREDICTIONS

1 2 3 4 5 6 7 8

PREDICTION

#1

Advanced malware volume will **DECREASE.**

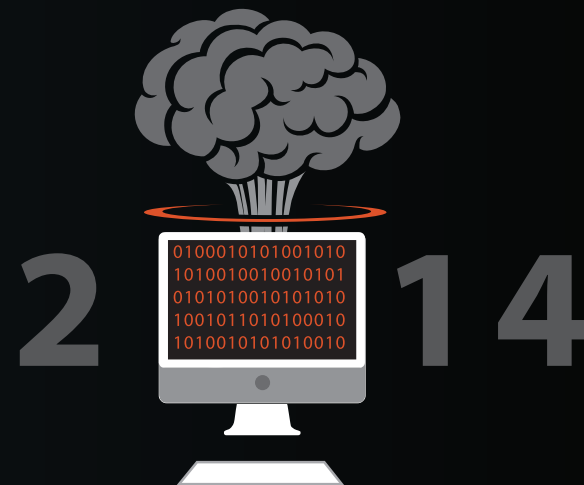


(But this isn't good news.)

PREDICTION

#2

A MAJOR data-destruction attack will happen.



PREDICTION

#3

Attackers will be more interested in **CLOUD DATA** than your network.



PREDICTION

#4

REDKIT, NEUTRINO and other exploit kits will struggle for power in the wake of the **BLACKHOLE AUTHOR ARREST.**



PREDICTION

#5

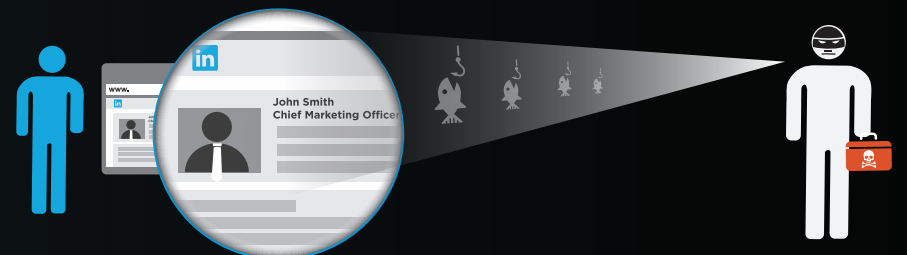
Java will remain highly exploitable and **HIGHLY EXPLOITED** – with expanded repercussions.



PREDICTION

#6

Attackers will increasingly **LURE EXECUTIVES** and compromise organizations via professional social networks.



PREDICTION

#7

Cybercriminals will **TARGET THE WEAKEST LINKS** in the “data-exchange chain.”



PREDICTION

#8

Mistakes will be made in **“OFFENSIVE”** security due to misattribution of an attack's source.

